

Specifications

Current Rating: 5 Amp
Operating Temp.: -55°C ~ +105°C
Dielectric Strength : 1000V AC/min
Insulation Resistance: 1000MΩ Min. at 500V DC
Contact Resistance: 30 million hms Max.
Insulator Material: PBT+30% Glass Fiber (UL94V-0)
Contact: Brass
Contact Plated: Gold Plated
Shell: Steel, Nickel Plated
Screw: Brass, Nickel Plated

Part Numbering System

DS01M - XX F X X X X X

Series _____

Contact Number: _____
09 15 25 37

Contact Type: _____
F = Female

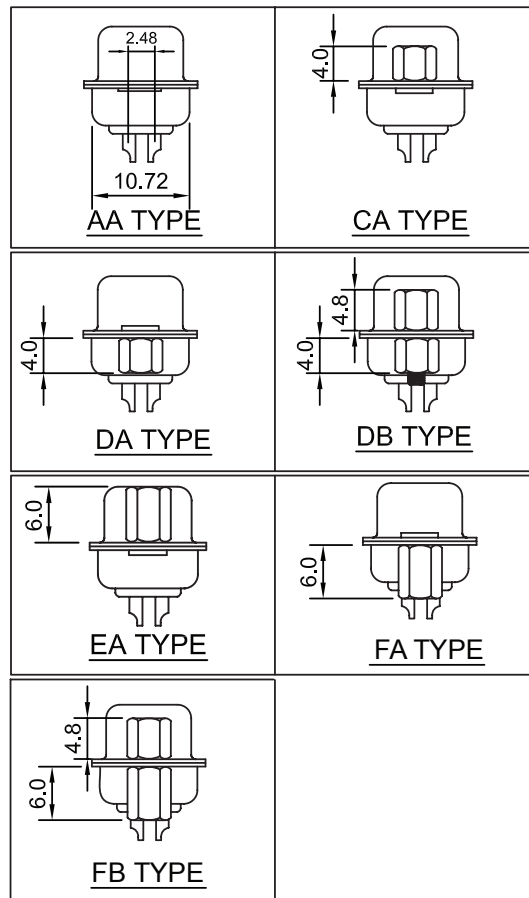
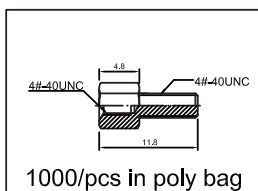
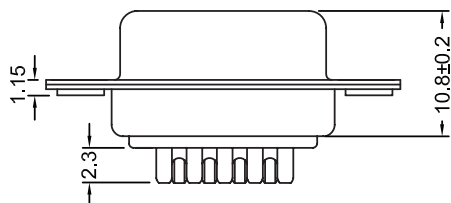
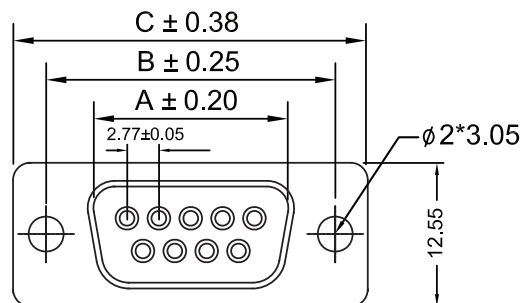
*** Contact Plating:** _____

Shell Plating: _____
N = Nickel

Process Option: _____
A = Through Hole
C = Riveted 4.0mm Open Hex Nut (Front)
D = Riveted 4.0mm Open Hex Nut (Rear)
E = Riveted 6.0mm Open Hex Nut (Front)
F = Riveted 6.0mm Open Hex Nut (Rear)

Parts Option: _____
A = No Accessories
B = Fixed 4.8mm x 11.8mm Jack Screws
D = Loose Jack Screws 4.8x11.8mm in Bag (1000pcs)

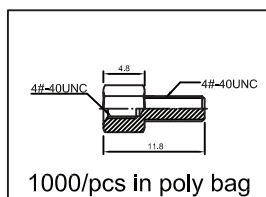
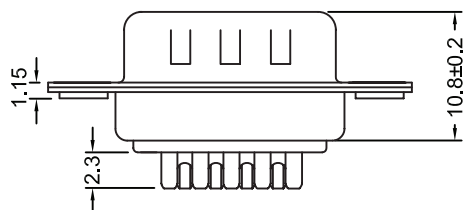
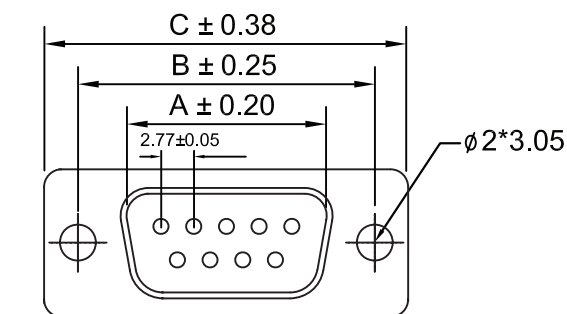
Insulator Color: _____
1 = White
2 = Blue
3 = Black



Contacts	Dimension mm		
	A	B	C
09	16.33	24.99	30.81
15	24.66	33.32	39.14
25	38.38	47.04	53.04
37	54.84	63.50	69.32

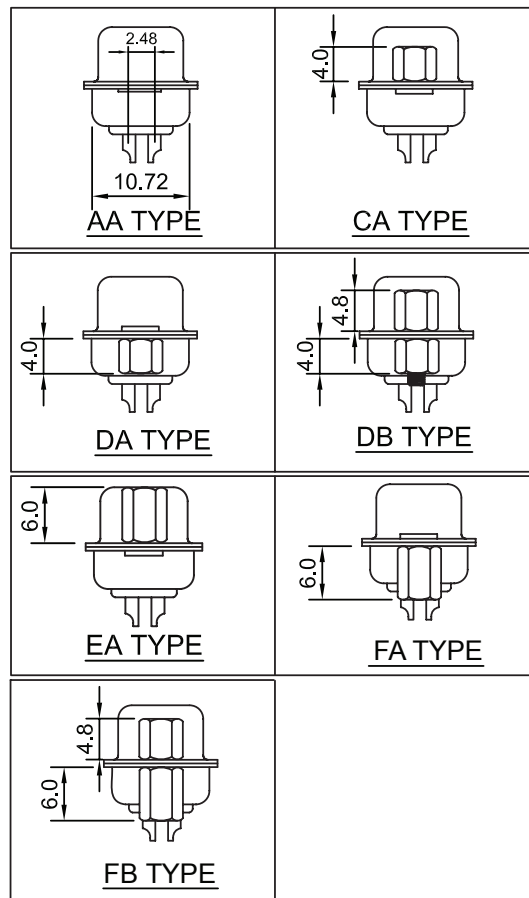
* Contact Plating Option	Full Gold Plating	Gold Plated On Contact Area Tin Plated on Solder Area	Full Tin Plating
	G : Gold Flash G10: Gold 10u" G15: Gold 15u" G30: Gold 30u"	S: Gold Flash S10: Gold 10u" S15: Gold 15u" S30: Gold 30u"	T: Tin 100u"

General Tolerance	
X. ± 0.50	X.° ± 5°
.X ± 0.20	.X° ± 2°
.XX ± 0.10	.XX° ± 1°
Units : mm	



Contacts	Dimension mm		
	A	B	C
09	16.92	24.99	30.81
15	25.25	33.32	39.14
25	38.96	47.04	53.04
37	55.42	63.50	69.32

* Contact Plating Option	Full Gold Plating	Gold Plated On Contact Area Tin Plated on Solder Area	Full Tin Plating
	G : Gold Flash G10: Gold 10u" G15: Gold 15u" G30: Gold 30u"	S: Gold Flash S10: Gold 10u" S15: Gold 15u" S30: Gold 30u"	T: Tin 100u"



General Tolerance	
X. ± 0.50	X.° ± 5°
.X ± 0.20	.X° ± 2°
.XX ± 0.10	.XX° ± 1°
Units : mm	

Specifications

Current Rating: 5 Amp
Operating Temp.: -55°C ~ +105°C
Dielectric Strength : 1000V AC/min
Insulation Resistance: 1000MΩ Min. at 500V DC
Contact Resistance: 30 million hms Max.
Insulator Material: PBT+30% Glass Fiber (UL94V-0)
Contact: Brass
Contact Plated: Gold Plated
Shell: Steel, Nickel Plated
Screw: Brass, Nickel Plated

Part Numbering System

DS01M - XX M X X X X X

Series _____

Contact Number: _____
09 15 25 37

Contact Type: _____
M = Male

*** Contact Plating:** _____

Shell Plating: _____
N = Nickel

Process Option: _____
A = Through Hole
C = Riveted 4.0mm Open Hex Nut (Front)
D = Riveted 4.0mm Open Hex Nut (Rear)
E = Riveted 6.0mm Open Hex Nut (Front)
F = Riveted 6.0mm Open Hex Nut (Rear)

Parts Option: _____
A = Non Accessories
B = Fixed 4.8mm x 11.8mm Jack Screws
D = Loose Jack Screws 4.8x11.8mm in Bag (1000pcs)

Insulator Color: _____
1 = White
2 = Blue
3 = Black